



Acme Sanitary Ware Co Ltd

Acme Building, 22-28 Nanking Street, Kowloon, Hong Kong
 Tel: 2388 7171 Fax: 2710 8012
 E-mail: acme@acmesanitary.com.hk
 Website: www.acmesanitaryware.com.hk

American Standard

PROJECT		REF		REV	ITEM CODE	
LOCATION		DATE			PAGE	

SANITARY WARE SPECIFICATION SHEET

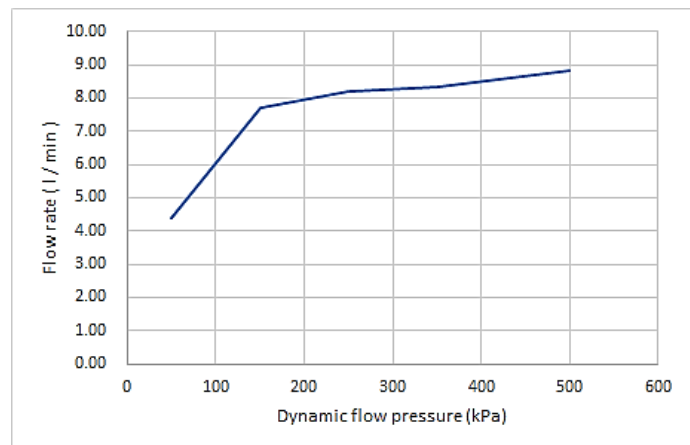
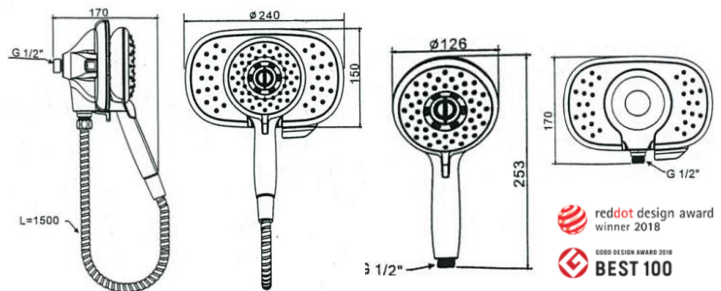
Item Descriptions	American Standard (PRC) "SPECTRA Duo" Chrome plated 4-function 2-in-1 shower head with 1.5M shower hose and four separate spray patterns-Drench, Sensitive, Powerwash®, and Massage; nominated flow rate 8.1 L/min in WELS Grade 1 ; Registration No. SB 18-0226	Illustration/ Drawing
Model	FFASS055-000500BC0	
Finish	Chrome plated	
Manufacturer	American Standard (PRC)	
Source	Acme Sanitary Ware Co. Ltd Mr. Eric Wong / Mr. Don Yuen	
Contact Tel/Fax	(852) 2388-7171 / (852) 2710-8012	
E-mail	acme@acmesanitary.com.hk	
Website	www.acmesanitary.com.hk	



Experience a combination of great innovation and design with the Spectra+ Duo™ 4-Function 2-in-1 shower head from American Standard. With its wide design, you'll have more water coverage – with the option to remove the center as a hand shower that makes cleaning the shower, bathing the kids, or washing the dog easier than ever before! The Spectra+ Duo brings customization to your shower with four separate spray patterns – Drench, Sensitive, Powerwash®, and Massage.

Features

- 2-in-1 design, with a wide shower head and hand shower combination
- AquaToggle™ easily changes sprays for Handshower
- Dock-Tite™ securely docks the shower head magnetically
- DivertPaddle™ allows for an easy switch between spray heads
- 4-Function shower head with different spray patterns to fit a variety of needs
- Drench provides a soaking spray with full body coverage
- Sensitive is a fine spray that is soft and gentle on the skin
- PowerWash® provides a powerful, wide spray that helps make cleaning the shower easy
- Massage brings a pulsating spray to help you unwind and relax



Dynamic flow pressure (kPa)	50	150	250	350	500
Flow rate (l/min)	4.40	7.70	8.20	8.35	8.83

<https://www.youtube.com/watch?v=Up6Djb-XNj8>

<https://www.youtube.com/watch?v=Vzp7Ld0znHw>

* All information of the above is for the reference only. No prior notice is made if any changes.



Power Wash



Massage

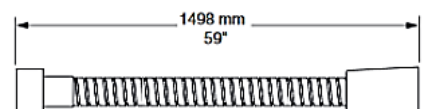
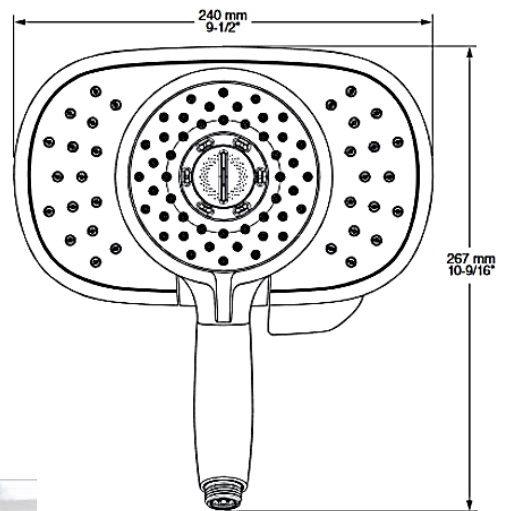
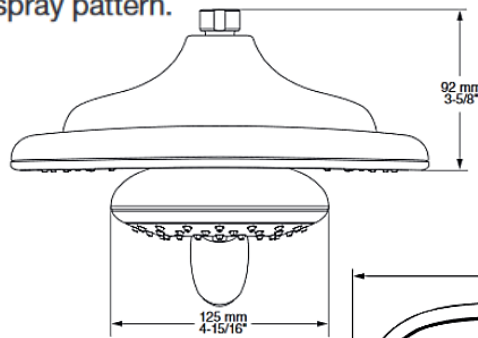
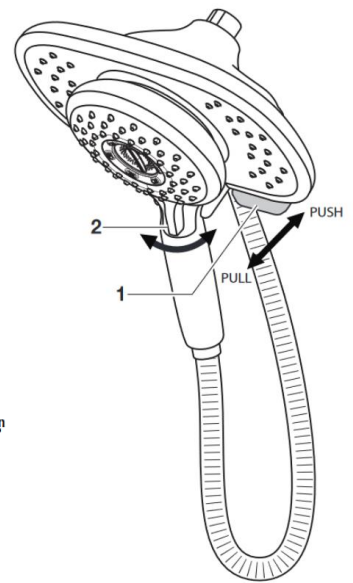


Sensitive



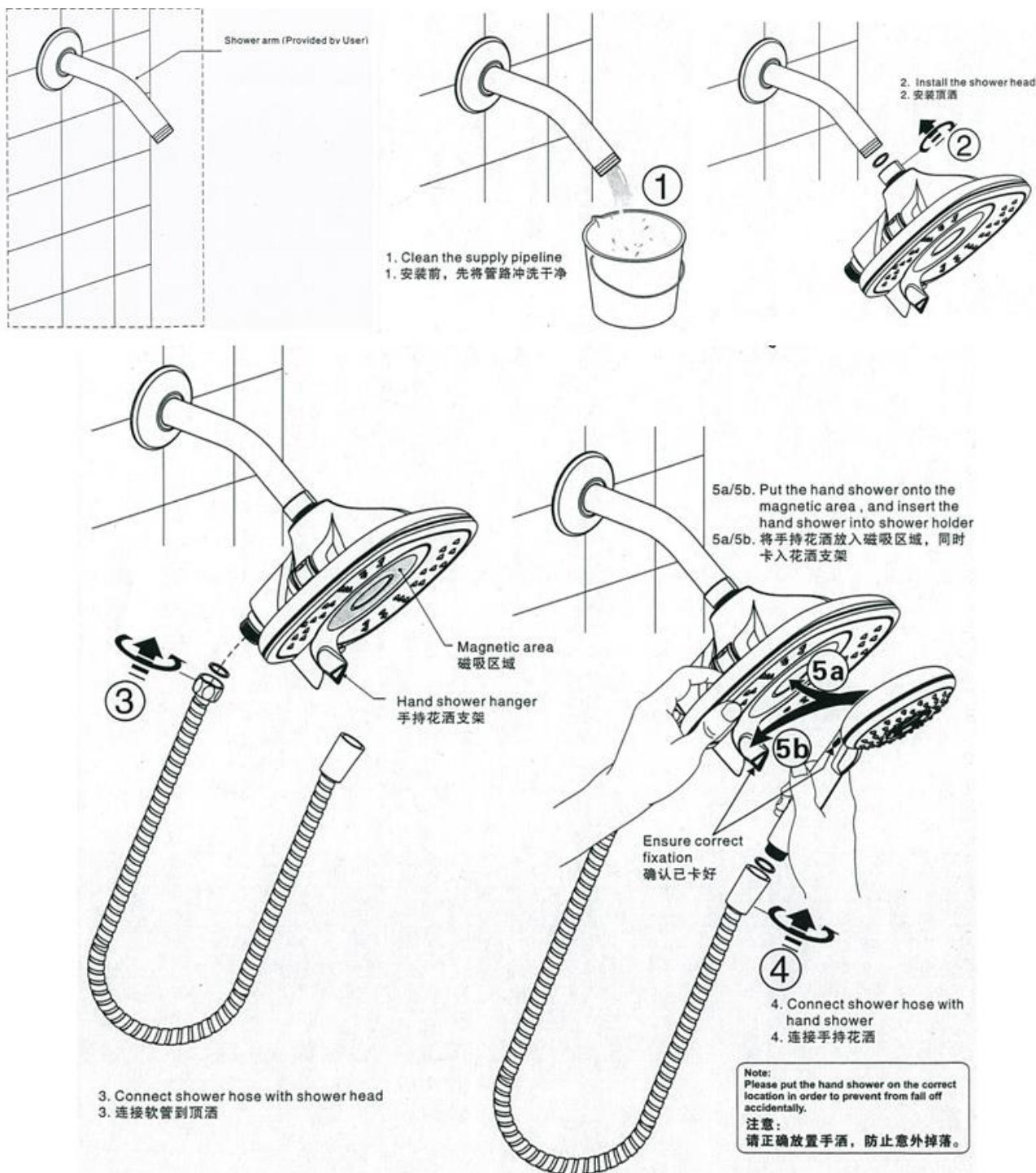
Drench

- Drench provides a soaking spray with full body coverage
- Sensitive is a fine spray that is soft and gentle on the skin
- PowerWash® provides a powerful, wide spray that helps make cleaning the shower easy
- Massage brings a pulsating spray to help you unwind and relax
- Turn water supplies on and check for leaks.
- For hand held shower and shower head **PULL DIVERTER (1)** forward and for hand shower only **PUSH** diverter back.
- Slide **KNOB (2)** to switch between spray pattern.



1. Before the installation, please confirm that the shower arm has been installed correctly (Their installation please refer to the installation themselves).
2. The shower arm, advise to purchase American Standard brand, reference model number: FFAS9916-000500BC0 or FFAS9916-000500BF0, etc.

1. 安装花洒前，确认花洒壁管已安装好（如下图）。（其具体安装请参考相应的说明书）
2. 花洒壁管，建议购买美标牌，参考型号：FFAS9916-000500BC0或FFAS9916-000500BF0等。



註冊號碼 (Registration No.): SB 18-0226




自願參與用水效益標籤計劃 - 沐浴花灑
Voluntary Water Efficiency Labelling Scheme - Showers for Bathing



茲證明
This is to certify that

將下列花灑在本計劃內註冊：
has registered the following shower under this scheme :

牌子 / Brand	:	American Standard
型號 / Model	:	FFASS055-000500BC0
原產地 / Country or Region Origin	:	China

在用水效益標籤上展示的標誌 <i>Symbolic Presentation on the Water Efficiency Label</i>	:	 滴水點 <i>Water droplet(s)</i>
用水效益級別 <i>Water Efficiency Grade</i>	:	1
耗水量 <i>Water Consumption</i>	:	8.1 公升/分鐘 <i>litres/minute</i>

簽發日期:
Date of Issue: 7 November 2018



水務署
Water Supplies Department



水務署署長(黃恩諾代行)
for Director of Water Supplies